

Style

Power DIN, plug
3 pin
Auto latch push-pull locking system

Ratings

Voltage: 48 V
Current: 8 A @ 48 V (Pin 1 and 2), 4 A @ 48 V (Pin 3)
Flammability: UL94 V-0

Operating Temperature Range

-20~80°C

Materials

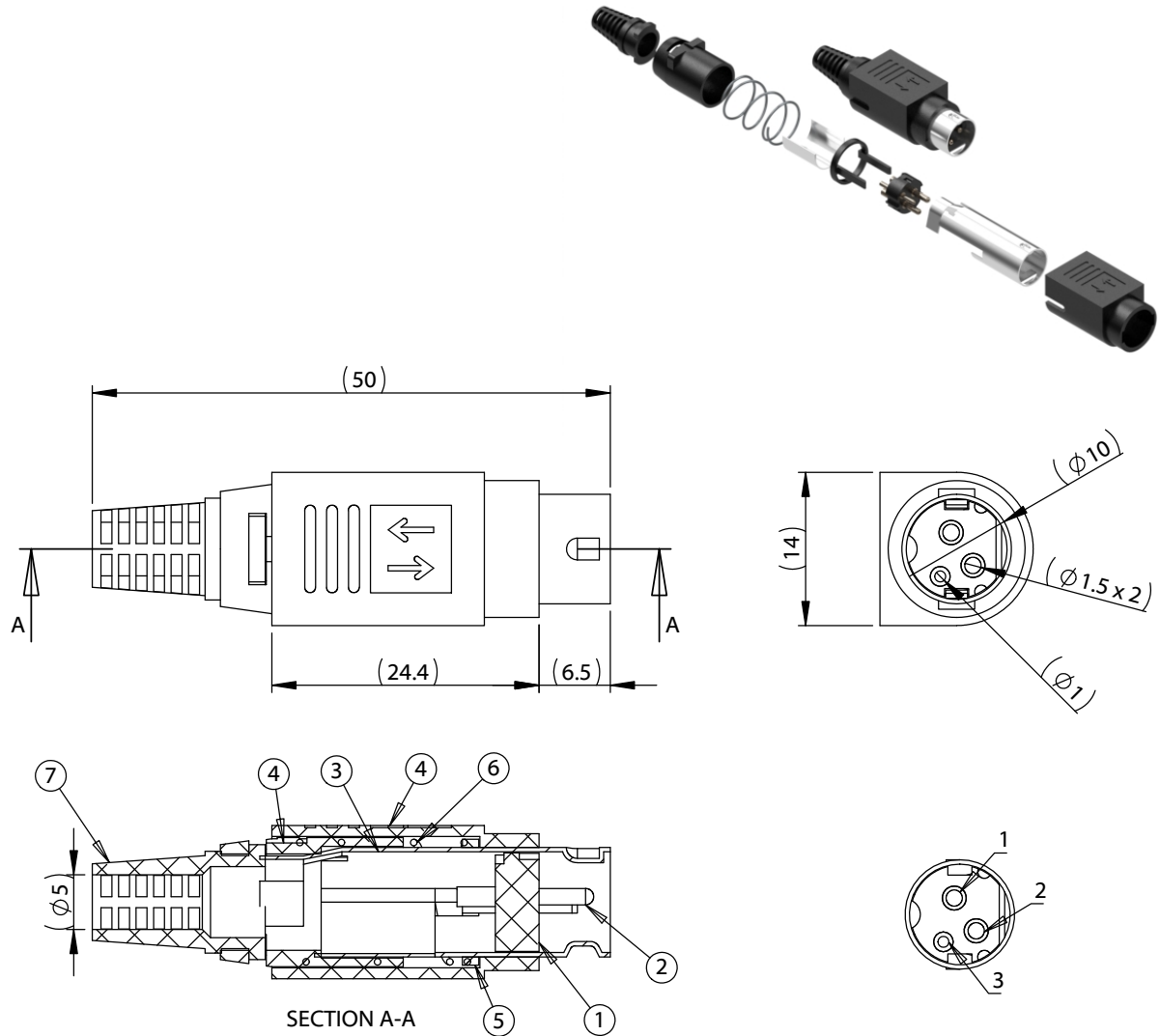
- ① Insulator: PBT+25% glass fiber black (UL94 V-0)
- ② Pin: C3604 Brass, nickel plated
- ③ Shell: C3604 Brass, nickel plated
- ④ Housing: ABS, black
- ⑤ Ring: POM
- ⑥ Spring: carbon steel, nickel plated
- ⑦ Strain relief: PVC, black

Electrical Requirements

Dielectric strength: 1 min @ 500 Vac
Insulation resistance: 100 MΩ @ 250 Vdc
Contact resistance: 30 mΩ or less

Mechanical Requirements

Life cycle: 500 mating cycles minimum
Max gauge size: 17 AWG (Pin 1 and 2), 22 AWG (Pin 3)
Max outer jacket diameter: \varnothing 5 mm



Revision:	Date:	Description:	Prepared:	Notes: RoHS compliant Function test: no open, no short circuit, no intermittent	TENSILITY tel 1.541.323.3228 800 877.670.7118 fax 1.541.323.4202 web tensility.com	
A	10/14/2024	Initial release	Verified:			
			Dimensions are in millimeters. Tolerances: X: \pm 0.3 mm X.X: \pm 0.1 mm X.XX: \pm 0.05 mm	Description: Connector, power DIN plug, 3 pin, 5.0 mm SR, nickel plated, assembly type	Size: A	Part number: 55-00417
					Scale: 1.5:1	Sheet 1 of 1