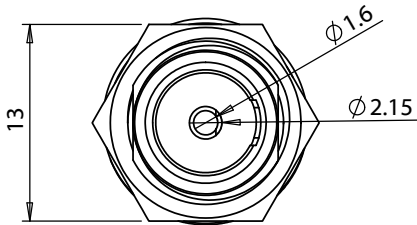
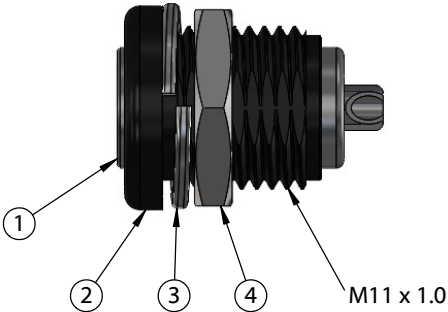
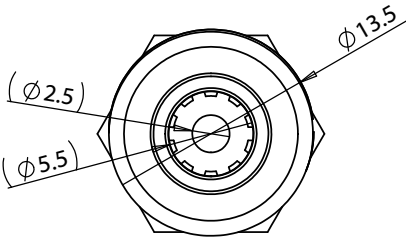
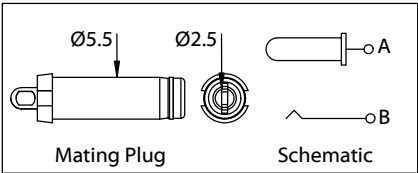
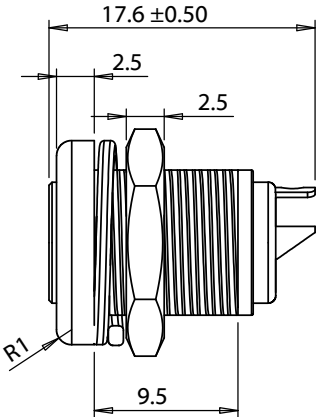
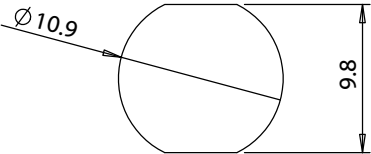


| ITEM NO. | PART NUMBER | DESCRIPTION | QTY. | COMPONENT NOTES |
|----------|-------------|--|------|-------------------|
| 1 | 50-01013 | Connector, dc jack, 5.5x2.5x17.6 mm, molding style, spring contacts, nickel plated, 200 °C | 1 | |
| 2 | 24-00287 | Overmold, jack, 13.5x14 mm, panel mount | 1 | LCP, 94V-0, black |
| 3 | 56-00001 | Hardware, washer, lock, 14x11.1x1.1 mm, SPCC, nickel plated | 1 | |
| 4 | 56-00000 | Hardware, nut, hex, 13x2.5 mm, M11x1.0, brass, nickel plated | 1 | |

Installation Details

Panel thickness: 1.5 - 4.5
Recommended panel cutout:



| | | | | | | | |
|-----------|------------|-----------------|--|--|---|--------------|--------------|
| Revision: | Date: | Description: | Prepared: | Notes: | <div>TENSILITY</div> <div> tel 1.541.323.3228 800 877.670.7118 fax 1.541.323.4202 web tensility.com </div> | | |
| A | 05/14/2025 | Initial release | Verified: | RoHS compliant | | | |
| | | | Dimensions are in millimeters. | Function test: no open, no short circuit, no intermittent | | | |
| | | | Tolerances: X: ± 0.3 mm X.X: ± 0.1 mm X.XX: ± 0.05 mm | Description: Connector, dc jack, 5.5x2.5xL17.6 mm, panel mount, nickel plated, threaded, nut and washer | | | |
| | | | | | Size: | Part number: | |
| | | | | | A | 54-00402 | |
| | | | | | Scale: 2:1 | | Sheet 1 of 2 |

Ratings

Maximum Operating Voltage: 48 Vdc
Maximum Operating Current: 11.5 A

Operating Temperature Range

-50°~200 °C

Electrical Requirements

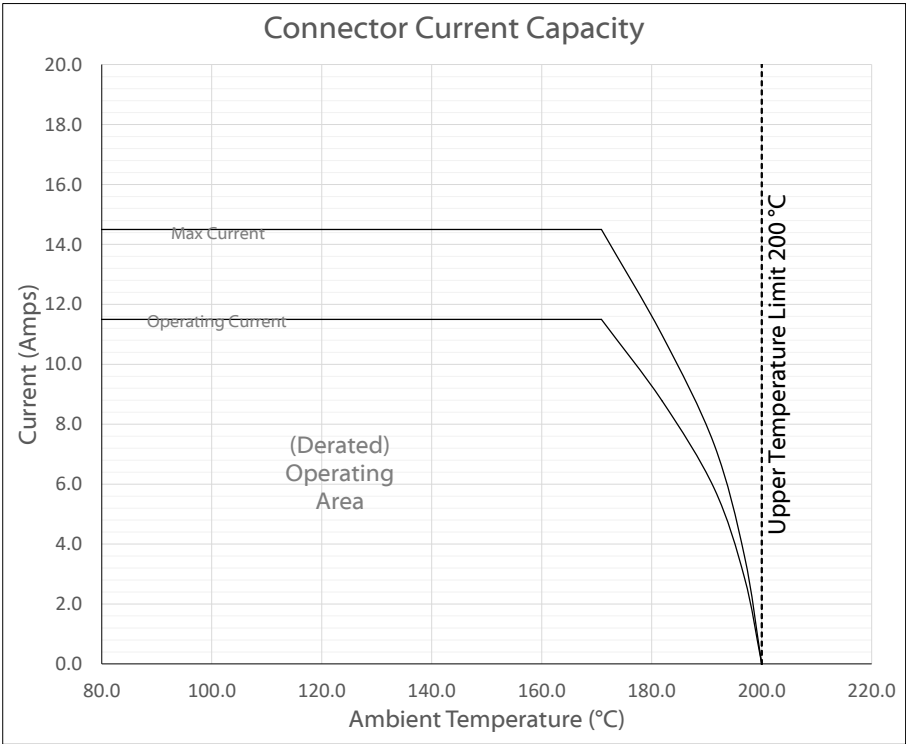
Dielectric strength: 1 min @ 500 Vac
Insulation resistance: 100 MΩ @ 500 Vdc
Contact resistance: 30 mΩ or less

Mechanical Requirements

Insertion force: 0.3-3 kgf
Withdrawal force: 0.3-3 kgf
Life cycle: 5000 mating cycles while maintaining 0.3-2.0 kgf min. insertion force, 0.2-1.5 kgf min. withdrawal force and less than 100 mΩ contact resistance.

Environmental Requirements

Heat test: 70 °C, relative humidity 70-85% for 96 hours while maintaining contact resistance: 100 mΩ maximum, insulation resistance: 50 MΩ @500 Vac, without looseness or deformation
Humidity test: 40 °C, relative humidity 90-100% for 96 hours while maintaining dielectric strength: 1 min. @ 500 Vac, insulation resistance: 50 MΩ @ 500 Vdc, contact resistance: 100 mΩ maximum
Salt spray test: 35 ±2 °C, relative humidity 90-95%, 5% NaCl mist for 24 hrs. Wash parts after test. Maintain mechanical requirements and a contact resistance of less than 80 mΩ.



Testing based on IEC 60512-5-2. Max current curve generated with isolated test article under controlled environmental conditions, based on a 40°C temperature rise difference. Test does not take into account external factors such as housings, mating cables, or other circuitry. Operating current curve (derated by 20% of maximum values) accounts for external factors, and manufacturing variation.

| | | | | | | | |
|-----------|------------|-----------------|--|--|---|--|--------------|
| Revision: | Date: | Description: | Prepared: | Notes: | <div>TENSILITY</div> <div>tel 1.541.323.3228 800 877.670.7118</div> <div>fax 1.541.323.4202 web tensility.com</div> | | |
| A | 05/14/2025 | Initial release | Verified: | RoHS compliant | | | |
| | | | Dimensions are in millimeters. Tolerances: X: ± 0.3 mm X.X: ± 0.1 mm X.XX: ± 0.05 mm | Function test: no open, no short circuit, no intermittent | Size: Part number: | | |
| | | | | Description: | A 54-00402 | | |
| | | | | Connector, dc jack, 5.5x2.5xL17.6 mm, panel mount, nickel plated, threaded, nut and washer | Scale: 2:1 | | Sheet 2 of 2 |