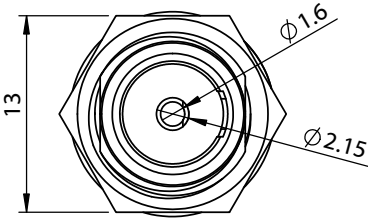
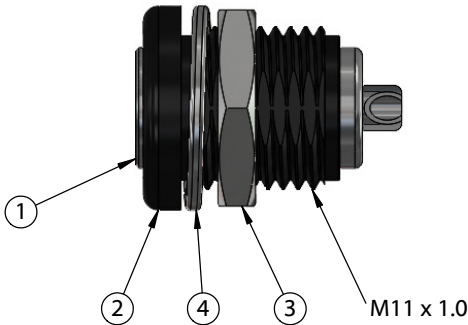
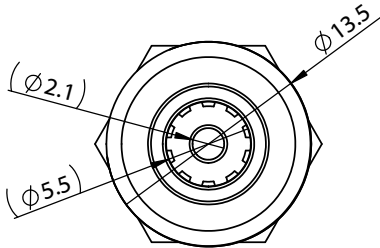
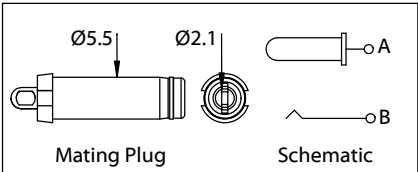
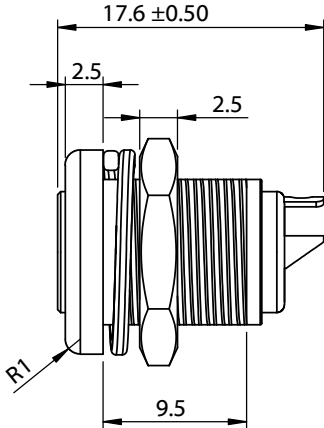
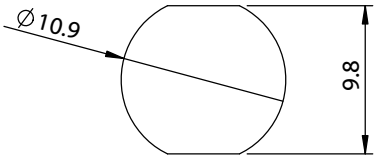


ITEM NO.	PART NUMBER	DESCRIPTION	QTY.	COMPONENT NOTES
1	50-01012	Connector, dc jack, 5.5x2.1x17.6 mm, molding style, spring contacts, nickel plated, 200° C	1	
2	24-00287	Overmold, jack, 13.5x14 mm, panel mount	1	LCP, 94V-0 , black
3	56-00000	Hardware, nut, hex, 13x2.5 mm, M11x1.0, brass, nickel plated	1	
4	56-00001	Hardware, washer, lock, 14x11.1x1.1 mm, SPCC, nickel plated	1	

Installation Details
 Panel thickness: 1.5 - 4.5
 Recommended panel cutout:



Revision:	Date:	Description:	Prepared:	Notes:	<div>TENSILITY</div> <div> tel 1.541.323.3228 800 877.670.7118 fax 1.541.323.4202 web tensility.com </div>		
A	05/14/2025	Initial release	Verified:	RoHS compliant Function test: no open, no short circuit, no intermittent			
			Dimensions are in millimeters. Tolerances: X: ± 0.3 mm X.X: ± 0.1 mm X.XX: ± 0.05 mm	Description:	Size:	Part number:	
				Connector, dc jack, 5.5x2.1xL17.6 mm, panel mount, nickel plated, threaded, nut and washer	A	54-00401	
					Scale: 2:1		Sheet 1 of 2

5

↑

4

3

2

1

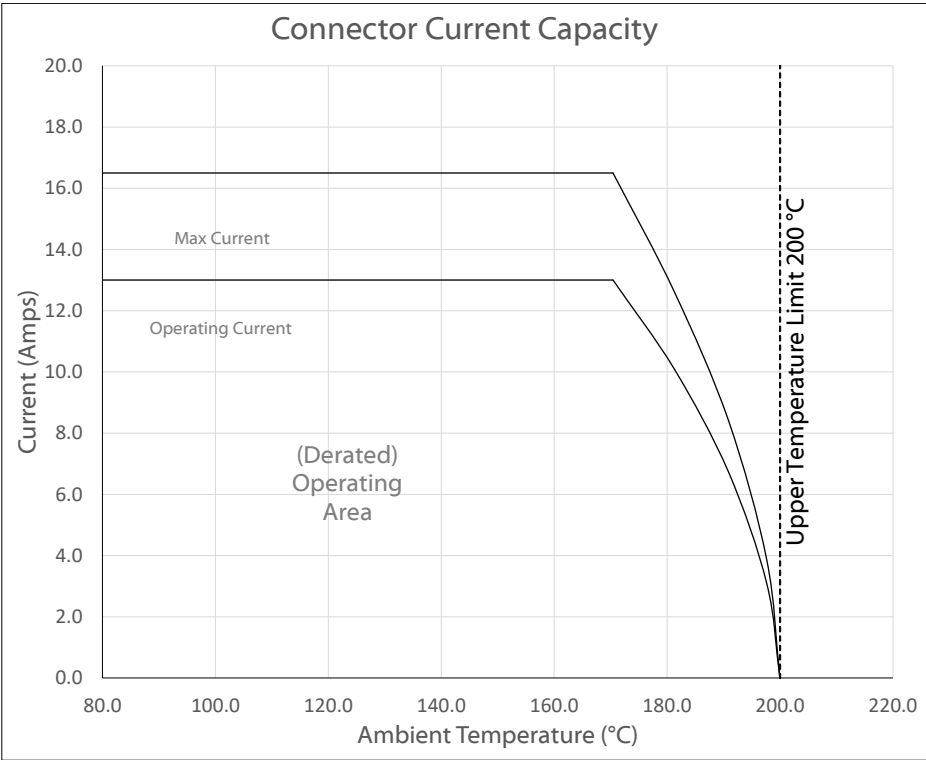
Ratings
Maximum Operating Voltage: 48 Vdc
Maximum Operating Current: 13 A

Operating Temperature Range
-50°~200 °C

Electrical Requirements
Dielectric strength: 1 min @ 500 Vac
Insulation resistance: 100 MΩ @ 500 Vdc
Contact resistance: 30 mΩ or less

Mechanical Requirements
Insertion force: 0.3-3 kgf
Withdrawal force: 0.3-3 kgf
Life cycle: 5000 mating cycles while maintaining 0.3-2.0 kgf min.
insertion force, 0.2-1.5 kgf min. withdrawal force and less than
100 mΩ contact resistance.

Environmental Requirements
Heat test: 70 °C, relative humidity 70-85% for 96 hours while
maintaining contact resistance: 100 mΩ maximum, insulation
resistance: 50 MΩ @500 Vac, without looseness or deformation
Humidity test: 40 °C, relative humidity 90-100% for 96 hours
while maintaining dielectric strength: 1 min. @ 500 Vac, insulation
resistance: 50 MΩ @ 500 Vdc, contact resistance: 100 mΩ
maximum
Salt spray test: 35 ±2 °C, relative humidity 90-95%, 5% NaCl
mist for 24 hrs. Wash parts after test. Maintain mechanical
requirements and a contact resistance of less than 80 mΩ.



Testing based on IEC 60512-5-2. Max current curve generated with isolated test article under controlled environmental conditions, based on a 40°C temperature rise difference. Test does not take into account external factors such as housings, mating cables, or other circuitry. Operating current curve (derated by 20% of maximum values) accounts for external factors, and manufacturing variation.

Revision:	Date:	Description:	Prepared:	Notes:	<div>TENSILITY</div> <div>tel 1.541.323.3228 800 877.670.7118</div> <div>fax 1.541.323.4202 web tensility.com</div>		
A	05/14/2025	Initial release	Verified:	RoHS compliant			
			Dimensions are in millimeters.	Function test: no open, no short circuit, no intermittent	Size: Part number:		
			Tolerances:	Description:			
			X: ± 0.3 mm	Connector, dc jack, 5.5x2.1xL17.6 mm, panel mount, nickel plated, threaded, nut and washer	A 54-00401		
			X.X: ± 0.1 mm				
			X.XX: ± 0.05 mm		Scale: 2:1		Sheet 2 of 2