

Style

Dc plug
Sealed, thread lock
IP68 (when mated and assembled)

Materials

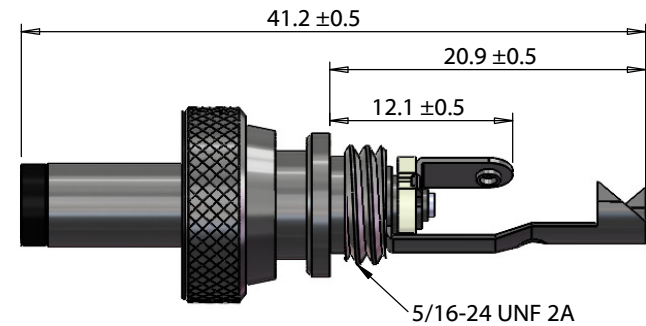
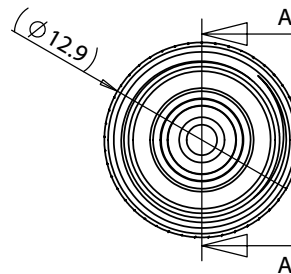
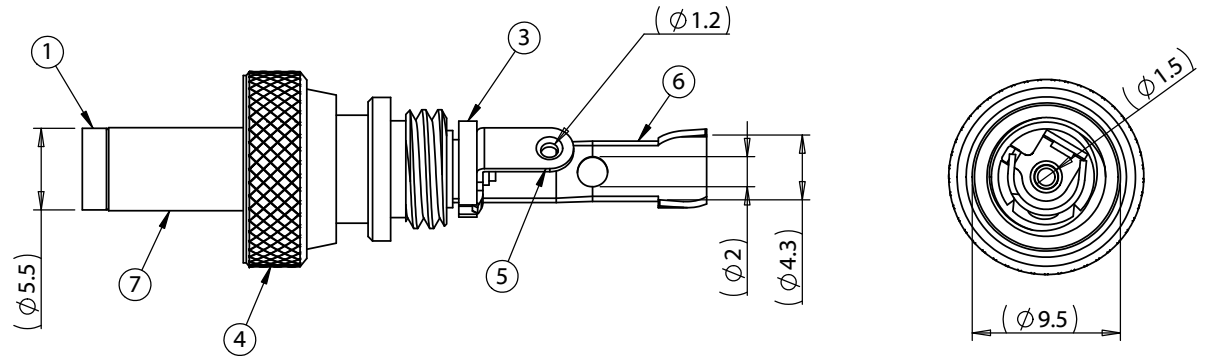
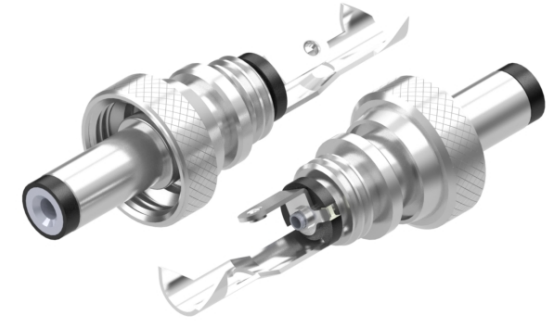
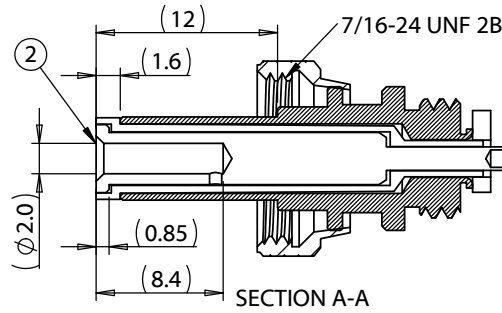
- ① Insulator, nylon + 15% glass fiber, UL94 V-0, black
- ② Center pin, C3604 brass, nickel plated
- ③ Insulation ring, fiberglass
- ④ Locking ring, C3604 brass, nickel plated
- ⑤ Center pin terminal, C2680 brass, tin plated
- ⑥ Cable clamp sleeve terminal, C2680 brass, tin plated
- ⑦ Outer shell, C3604 brass, nickel plated

Assembly Info

Compatible sleeves	Wire OD	Full connector assembly
56-00033	4.6 - 5.3	55-00200
56-00034	3.9 - 4.5	55-00201
56-00035	3.2 - 3.8	55-00202

Mating connectors

54-00409	Panel mount, thru hole, solder eyelet
54-00410	Panel mount, thru hole, pin
54-00414	Panel mount, thru hole, solder eyelet, 90°



Revision:	Date:	Description:	Prepared:	Notes:	<h1>TENSILITY</h1> <p>tel 1.541.323.3228 800 877.670.7118 fax 1.541.323.4202 web tensility.com</p>	
A	02/19/2025	Initial release		RoHS compliant		
			Verified:	Function test: no open, no short circuit, no intermittent	Size:	Part number:
			Dimensions are in millimeters. Tolerances: X: ± 0.3 mm X.X: ± 0.1 mm X.XX: ± 0.05 mm	Description: Connector, dc plug, 5.5x2.0xL41.20 mm, locking style, brass nickel plated, IP68, threaded	A	50-01076
					Scale: 2:1	Sheet 1 of 2

